



# TIMBERLINE MIDDLE SCHOOL TRANSITION KIT FOR FAMILIES

---



# What Parents Need to Know...

1. **What are the differences between elementary and middle school?**
2. **What are the main communication lines between school and families?**
3. **What systems are used to keep track of student work, assignments, grades and fees?**
4. **What to expect for academics and tests during the school year?**
5. **What sports and activities are available to students?**
6. **Transportation and school maps**
7. **Important Reminders**
8. **Getting to know your Timberline Middle School Staff**
9. **Getting to know your Timberline Middle PTSA**
10. **How can I get involved and volunteer?**
11. **Glossary of Terms and Acronyms**

# WHAT ARE SOME DIFFERENCES BETWEEN ELEMENTARY AND MIDDLE SCHOOL?



## Elementary School Expectations

**Curriculum:** Most subjects (except for specialists) are taught by one teacher in one classroom.

**Student responsibilities:** Students develop academic goals then the students, teachers, and parents work together to attain goals. Direct teacher/parent/student/counselor communication encouraged.

**Student clubs:** Most clubs are run by PTSA volunteers.

**Parent involvement:** Multiple in-class parent volunteer opportunities and teacher communication.

**Teacher Communication:** Teachers typically send weekly classroom updates as well as meet each term for parent/teacher conferences. Additional parent/teacher/counselor meetings are available upon request.

## Middle School Expectations

**Curriculum:** Each subject is taught by a different teacher in a different classroom.

**Student responsibilities:** Students develop academic goals and manage those goals on their own with guidance from teachers. Direct teacher/student/counselor communication encouraged.

**Student clubs:** Most clubs are run by the ASB.

**Parent Involvement:** Occasional event and/or after-school program volunteer opportunities.

**Teacher Communication:** Students are expected to advocate for themselves by taking responsibility for teacher communication. There are no scheduled parent/teacher conferences. Teacher/counselor meetings can be scheduled upon request.

# WHAT ARE THE MAIN COMMUNICATION LINES BETWEEN SCHOOL AND FAMILIES?



## School Communication

**School Website/Social Media:** This provides information on club, sports, and activities, course catalogs, daily schedules, curriculum updates, school calendar, and connects you to the TMS staff. <https://tms.lwsd.org/>

**Back to School Day:** In August, students go to school for ID pictures, books/laptops pick-up, PE uniform orders.

**Curriculum Night:** In September, parents experience your child's daily schedule with teacher presentations.

**Principal Weekly Bulletin:** Principal Paul updates families each week with a detailed bulletin.

**Emails:** The school principal, teachers, counselors and staff are available via email for discussions or meetings.

**Counselor Weekly Bulletin, Weekly Wolf:** The counseling department updates families weekly with a bulletin.



Timberline Middle School

## PTSA Communication

**PTSA Website/Social Media:** The PTSA provides staff grants, student scholarships, various student programs, and many family education and outreach programs.

<https://timberlineptsa.org/Home>

<https://www.facebook.com/TimberlinePTSA>

<https://www.facebook.com/groups/timberlineparents>

**PTSA Weekly Newsletter, *Timberline Times*:** The PTSA is a major link between school and families. Be sure to sign up for this weekly newsletter to get the most accurate, up-to-date information. <https://timberlineptsa.us20.list-manage.com/subscribe?u=bfbac0a37149b79815dfd7b2a&iid=b9545b37dd>

**PTSA Meetings:** There are monthly meetings, either Board Meetings or Membership Meetings to hear directly from our principal, meet other parents, and learn more about the many events and opportunities at Timberline. <https://timberlineptsa.org/Page/Ptsa/PTSAMeetings>



## District Communication

**District/School Notifications:** There are several notifications you can sign up for through the district, and they may include school emergencies, missing assignments, or updates on assistance for those in need. This site also track school buses, register for athletics, add funds to lunch programs, watch the district calendar, and pay any online fees or fines. Be sure to update your profile on Skyward. <https://www.lwsd.org/students-families/for-students-and-families>

**District Emails:** Watch your inbox for important weekly emails regarding district-wide updates and information.

**District Website:** It is important to bookmark the LWSD website for the most accurate and up-to-date district information. <https://www.lwsd.org/>



# WHAT SYSTEMS ARE USED TO KEEP TRACK OF STUDENT ASSIGNMENTS, GRADES, AND FEES?



**Microsoft Teams:** New to LWSD during COVID-19 remote learning, this system is used district-wide for virtual classrooms, assignments, virtual events, gradebooks, and all student communication. Additional systems such as WellNet, OneNote, Amplify, Big Ideas Math, Turn It In, or FlexiSched may also be used for specific classes. Students receive training on these systems as needed.

**Skyward Family Access:** This district system is still used to track student grades, test scores, attendance, schedules, and academic history.

**School Fees:** Most fees can be paid through the LWSD website or directly to the Timberline Bookkeeper in the front office. Most of these fees can be completed during the Back-to-School Day event. Some fees that can be expected in middle school may include:

- ASB Fee - Students who wish to participate in after-school sports, music, clubs, or activities are required to pay an ASB fee – typically between \$25 and \$50.
- Classroom Supplies – Some classes may require an additional fee to cover supplies.
- PE Clothes and Spirit Wear – PE uniforms are not currently required in 2021. Spirit Wear, when available, is not required.
- Lunch Accounts – Student lunch accounts that can be replenished through the LWSD website
- Club or Team fees – There are often additional fees that need to be paid to participate in competitive clubs and sports; these fees vary per activity.
- Yearbook – Annual yearbooks can be ordered for typically between \$30 and \$40.
- Fines – Fines may accrue due to late library books, laptop repair, unreturned uniforms or equipment, etc.
- Fundraising – The school, the PTSA, and the counseling department run fundraising programs to help offset the costs of programs for students and to help families in need

**Scholarships:** Financial assistance is always available if needed. These scholarships are completely confidential and handled through the counseling office.

# WHAT TO EXPECT FOR ACADEMICS AND TESTS DURING THE SCHOOL YEAR?



**Course Catalog:** The annual course catalog can be found on the school website. This catalog will list all available classes offered for students as well as information on class paths for middle school. Students will work with their parents, teachers, and counselors to determine the best classes each year. Class choices are typically submitted in January, final schedules are available in September at the beginning of the school year.

**Final Schedules:** Final schedules are typically released no earlier than one week before classes begin. Please note that when class requests are submitted each year, these are not guaranteed. Class placement is dependent on several factors including previous grades, pre-requisite completion, space availability, etc.

**Schedule Changes:** Students have the opportunity to request schedule changes at the beginning of each semester.

**Core Classes:** This term refers to classes that are required for all students to complete each year in order to move on to the next grade level.

**Elective Classes:** This term refers to classes that students can choose based on their specific interests. There are elective requirements that students must take each year. Electives give students an opportunity to explore subjects that they may not see during a typical school year.

**Class Curriculum:** A short description of each class can be found in the course catalog. A full syllabus for each class will be handed to each student at the beginning of the year. It is expected that this syllabus be read, discussed, and signed by both students and parents and then returned to teachers.

**Homework:** Homework is assigned daily but will vary by class. Teachers will typically follow the 10 minute per grade rule: • 6th grade (60 minutes for all subjects) • 7th grade (70 minutes for all subjects) • 8th grade (80 minutes for all subjects). Parents can sign up at the district level to be notified of missing homework assignments. Grades can be checked on the LWSD site as well as the MS Teams pages for each class.

**Tests and Exams:** Tests will be administered periodically and will vary by class. Midterm and final exams are important and will occur in most classes to ensure all students are reaching standards. Test and exam expectations will be clearly stated the syllabus for each class.

**Standardized Tests:** Various standardized tests will be used throughout the school year. Information on these tests will be clearly communicated through school communication channels.

**English Language Learning:** Classes are offered to empower new English-speaking students to both participate in classroom curriculum and attain English proficiency.

# WHAT SPORTS AND ACTIVITIES ARE AVAILABLE TO STUDENTS?



## School Sponsored Activities

### Intramural Athletics:

Non-competitive sports played with teams formed within TMS. These sports vary each season and are dependent upon student interest.

### Competitive Athletics:

Teams are formed through try-outs and travel to other schools for competitive games. The current competitive sports available include: Basketball, Cross-Country, Tennis, Soccer, Badminton, Wrestling, Track, and Volleyball.

### Competitive STEM Clubs:

These clubs are formed through tryouts and testing. Teams compete locally and nationally against other schools.

Current competitive STEM clubs include:

National Science Bowl and Science Olympiad

### Open Student Clubs:

These are clubs supported by the school with the help of teacher and parent volunteers. Some clubs do require specific skills to join, others are offered to allow students to learn new skills. Some of these clubs include: Math Club, Science Club, Robotics Club, Band and Orchestra, National Junior Honor Society

## ASB Sponsored Activities

ASB clubs are started and run completely by students with the help of the ASB teacher coordinator. Students are encouraged to develop and offer a variety of club opportunities to fellow students. These clubs are held during school hours in flex-time.

### Some ASB sponsored clubs may include:

Battle of the Books

Knitting

Crafting

Green Team

Comic Club

Drawing Club

Minecraft

Photography

## PTSA Sponsored Activities

PTSA sponsored clubs include both annual, recurring clubs as well as clubs based on student and family interest.

### Some PTSA sponsored activities may include:

Reflections Art Contest

Essay Contest

Financial Beginnings

Spelling Bee

Speaker Events

Parent Education Seminars

Sustainability Programs

Bike Safety Rodeo

Family Nights (Bingo or Art)

Debate Club



# TRANSPORTATION AND SCHOOL MAPS



## Traffic Flow During Drop-Off and Pick-Up

- Parents must pick up and drop off students in the student drop off area. No parent vehicles are allowed in the bus drop off loop.
- Please always pull completely forward, and allow 2-5 feet space between cars.
- Please only use parking spaces if you are entering the building.
- Being constantly aware and driving slowly is very imperative as Timberline has many walkers and bikers during peak times.
- Students are to be dropped off in designated areas (shown below on map) ONLY – no “street drop-offs” are allowed.

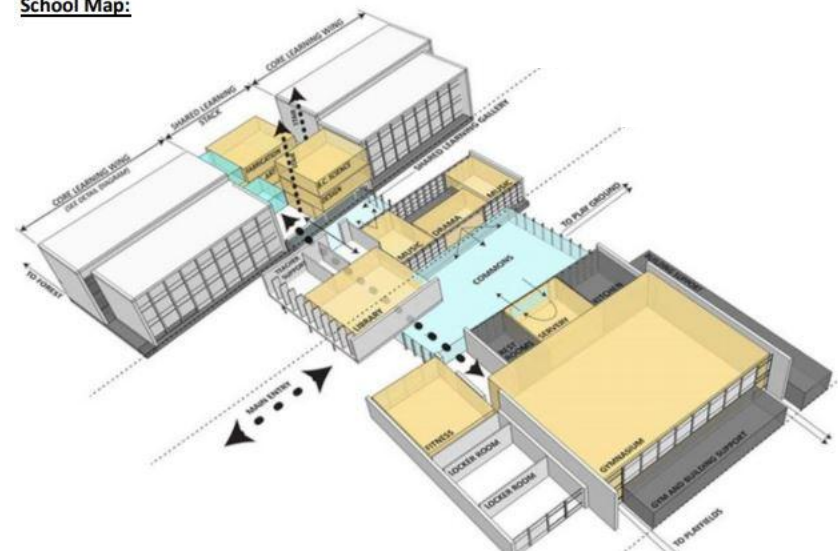


## In-School Visitors

Persons who are not TMS students or district staff are not allowed on campus during school hours without permission. Visitors to Timberline Middle School are required to report to the main office to sign-in and out and obtain a name badge.

- Students not attending TMS are not permitted as guests during the school day.
- Regular volunteers at Timberline must complete an LWSD volunteer application.
- Parents wishing to visit their student’s classroom or teachers should make arrangements in advance.
- Previous TMS students are welcome to visit teachers by appointment and after school.

School Map:





# IMPORTANT REMINDERS



**Cell Phone Use:** NO CELL PHONES may be used from the start of the school day (8:25AM) to the end of the school day (Mon, Tue, Thu, and Fri 2:55PM, Wed 1:25PM).

**Dress Code:** Students are expected to be dressed appropriately or in a manner that will not detract from the personal safety of the individual or group. A shirt, bottom (pants, shorts, leggings, skirt), or dress and footwear must be worn at all times. Clothing that is see-through, displaying offensive or distracting words, pictures or slogans, advertising or promoting alcohol, illegal drugs, or a controlled substance, or containing sexual innuendos are not allowed. If a student is in violation of the dress code they will be counseled privately by staff or administration.

**Attendance:** The school will determine whether absences or tardies are excused. Excused absences include the following: illness, medical appointments, family emergency, religious holiday, school-related field trips, suspensions, or other pre-arranged absence. If sufficient reason for an absence is not provided, the absence will be considered unexcused. Students who exceed four unexcused absences in a semester will be sent a letter of concern. Students who exceed ten total absences in a semester will be required to discuss a plan to prevent further absences.

**Bathrooms:** Students will use the bathroom that corresponds to your gender identity. Stay inside the lines of the bathroom corresponding to your gender identity at all times. Hand washing sinks are in a shared space and can be used by everyone.

**Behavior:** Students are to follow the PACK Way at all times whenever representing Timberline Middle School. **P** practice resilience, **A**ct with integrity, **C**are for others, and **K**eeep safety first.

## Daily Schedule:

Monday (PACK TIME)

Class	Start	End	# of mins
Announcements	8:25	8:30	5
Period 1	8:30	9:18	48
Period 2	9:23	10:11	48
Period 3	10:16	11:04	48
<b>PACK TIME</b>	<b>11:09</b>	<b>11:39</b>	<b>30</b>
<i>A Lunch</i>	<i>11:39</i>	<i>12:09</i>	<i>30</i>
Period 4	12:14	1:09	55
<b>PACK TIME</b>	<b>11:09</b>	<b>11:39</b>	<b>30</b>
Period 4	11:44	12:09	25
<i>B Lunch</i>	<i>12:09</i>	<i>12:39</i>	<i>30</i>
Period 4	12:44	1:09	25
<b>PACK TIME</b>	<b>11:09</b>	<b>11:39</b>	<b>30</b>
Period 4	11:44	12:39	55
<i>C Lunch</i>	<i>12:39</i>	<i>1:09</i>	<i>30</i>
Period 5	1:14	2:02	48
Period 6	2:07	2:55	48

Tuesday / Thursday (FLEX)

Class	Start	End	# of mins
Announcements	8:25	8:30	5
Period 1	8:30	9:15	45
Period 2	9:20	10:05	45
<b>FLEX TIME</b>	<b>10:10</b>	<b>10:55</b>	<b>45</b>
Period 3	11:00	11:45	45
<i>A Lunch</i>	<i>11:45</i>	<i>12:15</i>	<i>30</i>
Period 4	12:20	1:15	55
Period 4	11:50	12:15	25
<i>B Lunch</i>	<i>12:15</i>	<i>12:45</i>	<i>30</i>
Period 4	12:50	1:15	25
Period 4	11:50	12:45	55
<i>C Lunch</i>	<i>12:45</i>	<i>1:15</i>	<i>30</i>
Period 5	1:20	2:05	45
Period 6	2:10	2:55	45

Wednesday (PACK TIME)

Class	Start	End	# of mins
Announcements	8:25	8:30	5
Period 1	8:30	9:05	35
Period 2	9:10	9:45	35
Period 3	9:50	10:25	35
<i>A Lunch</i>	<i>10:25</i>	<i>10:55</i>	<i>30</i>
Period 4	11:00	11:35	35
<b>PACK TIME</b>	<b>11:35</b>	<b>12:05</b>	<b>30</b>
Period 4	10:30	11:05	35
<i>B Lunch</i>	<i>11:05</i>	<i>11:35</i>	<i>30</i>
<b>PACK TIME</b>	<b>11:40</b>	<b>12:05</b>	<b>25</b>
Period 4	10:30	11:05	35
<b>PACK TIME</b>	<b>11:05</b>	<b>11:35</b>	<b>30</b>
<i>C Lunch</i>	<i>11:35</i>	<i>12:05</i>	<i>30</i>
Period 5	12:10	12:45	35
Period 6	12:50	1:25	35

Friday (normal)

Class	Start	End	# of mins
Announcements	8:25	8:30	5
Period 1	8:30	9:25	55
Period 2	9:30	10:25	55
Period 3	10:30	11:25	55
<i>A Lunch</i>	<i>11:25</i>	<i>11:55</i>	<i>30</i>
Period 4	12:00	12:55	55
Period 4	11:30	11:55	25
<i>B Lunch</i>	<i>11:55</i>	<i>12:25</i>	<i>30</i>
Period 4	12:30	12:55	25
Period 4	11:30	12:25	55
<i>C Lunch</i>	<i>12:25</i>	<i>12:55</i>	<i>30</i>
Period 5	1:00	1:55	55
Period 6	2:00	2:55	55

# GETTING TO KNOW YOUR TIMBERLINE MIDDLE SCHOOL STAFF



## Timberline Middle School

9900 Redmond Ridge Dr NE  
Redmond, WA 98053

Phone: 425-936-2820 Fax: 425-868-1426 Website: <https://tms.lwsd.org/>

Timberline Calendar: <https://tms.lwsd.org/about-us/calendar> District Calendar: <https://tinyurl.com/yyduybt3>

- Attendance Phone Number: 425-936-2821
- Attendance Email: [TimberlineMSAttend@lwsd.org](mailto:TimberlineMSAttend@lwsd.org)
- Principal: Heidi Paul - [hpaul@lwsd.org](mailto:hpaul@lwsd.org)
- Associate Principal: Lindsay Schilaty - [lschilaty@lwsd.org](mailto:lschilaty@lwsd.org)
- Dean of Students: Garrick Chock - [gchock@lwsd.org](mailto:gchock@lwsd.org)
- Office Manager: Nancy Hunter - [nhunter@lwsd.org](mailto:nhunter@lwsd.org)
- Attendance Secretary: hiring a new staff member – stay tuned
- ASB club information/student activities: Sally Rusk - [srusk@lwsd.org](mailto:srusk@lwsd.org)
- Counseling Secretary: Ashley Short - [ashort@lwsd.org](mailto:ashort@lwsd.org)
- Counselor A-J: Jackie Coons - [jcoons@lwsd.org](mailto:jcoons@lwsd.org) (425) 936-2812, ext.53252
- Counselor K-M: Renee Hesky - [Rhesky@lwsd.org](mailto:Rhesky@lwsd.org) (425) 936-2812, ext. 54211
- Counselor N-Z: Toby Doyle - [tdoyle@lwsd.org](mailto:tdoyle@lwsd.org) (425) 936-2812, ext. 53221
- Sports sign-ups or student fees: Carla Yamashiroya Hedges - [cyamashiroyahedges@lwsd.org](mailto:cyamashiroyahedges@lwsd.org)
- Sports questions (outside of sign-up process): Ryan Jones - [ryanjones@lwsd.org](mailto:ryanjones@lwsd.org)

# GETTING TO KNOW YOUR TIMBERLINE MIDDLE PTSA



## Timberline Middle PTSA

<https://timberlineptsa.org/>

### 2020-2021 Board

- Co-Presidents June Chen [president@timberlineptsa.org](mailto:president@timberlineptsa.org)  
Amy Maxim [president@timberlineptsa.org](mailto:president@timberlineptsa.org)
- Executive VP Meredith Cain [evp@timberlineptsa.org](mailto:evp@timberlineptsa.org)
- Treasurer Trish Lorr [treasurer@timberlineptsa.org](mailto:treasurer@timberlineptsa.org)
- Secretary Ann Cygan [secretary@timberlineptsa.org](mailto:secretary@timberlineptsa.org)
  
- VP Communications Thea Warner [communications@timberlineptsa.org](mailto:communications@timberlineptsa.org)
- Co-VP Programs Divya Jain [programs@timberlineptsa.org](mailto:programs@timberlineptsa.org)  
Shobana Venkatachalam [programs@timberlineptsa.org](mailto:programs@timberlineptsa.org)
- VP Volunteers Miina Beyreis [volunteers@timberlineptsa.org](mailto:volunteers@timberlineptsa.org)
- VP Ways and Means Raksha Pant [waysmeans@timberlineptsa.org](mailto:waysmeans@timberlineptsa.org)
- VP FACE Shilpa Dhananjayan [face@timberlineptsa.org](mailto:face@timberlineptsa.org)
- VP Sustainability Whitney Holt [sustainability@timberlineptsa.org](mailto:sustainability@timberlineptsa.org)
- VP Advocacy OPEN
  
- Membership Chair OPEN
- DEI Chair OPEN
- E-Prep Chairs Vincent Bersagol [eprep@timberlineptsa.org](mailto:eprep@timberlineptsa.org)
- Hospitality Co-Chairs Tia Kim [hospitality@timberlineptsa.org](mailto:hospitality@timberlineptsa.org)  
Jennifer de la Port [hospitality@timberlineptsa.org](mailto:hospitality@timberlineptsa.org)
- Reflections Chair Meredith Cain [reflections@timberlineptsa.org](mailto:reflections@timberlineptsa.org)
- Webmaster Sangeetha Visweswaran [webmaster@timberlineptsa.org](mailto:webmaster@timberlineptsa.org)
- Social Media Chair Larissa Ruiz [socialmedia@timberlineptsa.org](mailto:socialmedia@timberlineptsa.org)
- Social Club Chair Kelley Osmanbhoy [serviceclub@timberlineptsa.org](mailto:serviceclub@timberlineptsa.org)

### **Become a Member - Membership Benefits Us All!**

Thank you to all of you who have already become Timberline Middle PTSA members. We hope that you are enjoying the benefits to being a member and attending our General Membership Meetings so that your voice can be heard! Please consider getting involved and continuing our ongoing efforts to advocate for our children! <https://timberlineptsa.org/Page/Ptsa/PTSAMembership>

### **Donate Today - Your Generosity Makes a Difference!**

Because of your generous donations to our annual Pass the Hat fundraiser, we have been able to provide enrichment programs to our students, update our emergency preparation supplies, provide appreciation and gratitude to our staff members, support our community members in need, fund several staff grants for equipment that directly effects every Timberline student, and so much more. To learn more about how you can help, visit our fundraising page - <https://timberlineptsa.org/Package/Donate>

And please don't forget that you can DOUBLE YOUR DONATION with corporate matching! Check out which companies in this area match your tax-free donation - <https://timberlineptsa.org/Package/Donate>

### **Stay Connected with PTSA activities, clubs, and information!**

We encourage you to sign up for our newsletter, Timberline Times, and follow our Facebook page. These are two communication channels that we rely on to connect with each of you!

Info@timberlineptsa.org - General inquiries

Programs@timberlineptsa.org - Before and after school program inquiries

Face@timberlineptsa.org - Family and community engagement inquiries

Volunteers@timberlineptsa.org - Volunteering inquiries

# HOW CAN I GET INVOLVED AND VOLUNTEER?



- Without our amazing volunteers, many valuable programs and activities would not exist. Your time is valuable, and we are grateful for every volunteer minute. We have many different volunteer positions - there is something for everyone. Some positions require a year-long commitment, some require just a few hours.
- All volunteers (virtual or in-person) must be approved by the Lake Washington School District. Before you start volunteering at Timberline, you must go through a screening process for the safety of students and volunteers alike. Follow this link to begin the application process. LWSD Volunteer Approval Process: <https://www.lwsd.org/get-involved/volunteering-in-lwsd/volunteer-application-process> You will need a scanned copy of your driver's license. The application takes about 10 minutes to complete, and you will receive a confirmation email regarding your approval status within 2 weeks. Once approved, your status as an approved volunteer will last for two years.
- We want to work together and there is always room for volunteers! Check out opportunities here: <https://timberlineptsa.org/Page/Volunteer/VolunteerInfo>
- We would love to have your help in supporting our school! If you can donate some time or have any special skills you're willing to share, please sign up below to be added to our volunteer database. <https://timberlineptsa.org/Packet/Volunteer/VolunteeringPacketPage/1>
- If you have any questions, please email [Volunteers@TimberlinePTSA.org](mailto:Volunteers@TimberlinePTSA.org)

# GLOSSARY OF TERMS AND ACRONYMS



ASB	Associated Student Body – similar to student council, a student-led leadership program within the school
AP	Advanced Placement – higher level courses that students can request for their schedule
Affinity Group	A community group led by volunteers that focuses on the needs and concerns of specific cultural groups
Ask Your Principal	A PTSA program that allows you to submit questions to Principal Paul directly <a href="https://tinyurl.com/y2q9uwqr">https://tinyurl.com/y2q9uwqr</a>
BTS	Back To School – the annual event that welcomes students and families back to school
CogAT	Cognitive Abilities Test – a test used to determine highly capable or gifted students
Directory	An online resource for PTSA members that lists contact information for families.
ELL	English Language Learner – this refers to students who are learning English as a second language
E-Prep	Emergency Preparation - a district wide initiative that ensures all schools are equipped with supplies to keep students safe during emergencies
GEAC	Gifted Education Advisory Council – a parent led association for families of gifted and highly capable students
Highly Capable	Term used to describe students who qualify to participate in advanced courses such as Quest – website: <a href="https://tinyurl.com/y5mayt4h">https://tinyurl.com/y5mayt4h</a>
InvestEd	A service that collects and often matches donations to the school
PACK Way	The TMS expected culture – <b>P</b> actice resilience, <b>A</b> ct with integrity, <b>C</b> are for others, <b>K</b> ee safety first
Pass the Hat	Annual fundraiser for the TMS PTSA – helps fund staff grants, scholarships, families in need, curriculum needs
LWSD	Lake Washington School District – the school district for TMS
Let's Talk	A special opportunity for families to submit questions directly to the district and the superintendent <a href="https://www.lwsd.org/help/lets-talk">https://www.lwsd.org/help/lets-talk</a>
PBIS	Positive Behavioral Interventions and Supports – a program to reward students for positive behavior
Partner Fundraising	Ways to donate to TMS through typical shopping – AmazonSmile, Everything Party, etc.
PTSA	Parent Teacher Student Association
NJHS	National Junior Honor Society – an opportunity for students to achieve academic recognition
NSB	National Science Bowl – a competitive STEM club in which students may participate
SBA	Smarter Balanced Assessment – the standardized tests used in Washington for 3 <sup>rd</sup> – 8 <sup>th</sup> graders
SO	Science Olympiad - a competitive STEM club in which students may participate
Skyward	An LWSD website where families can pay fees, check grades, and get the latest school and district information
STEM	Science Technology Engineering Math
Timberline Games	Annual school fundraiser where students compete in team-based events
Timberline Times	The weekly TMS PTSA newsletter
TMS Help	Fundraiser that provides funding directly to our counseling department to help students and families in need
Wednesday Wolf	A TMS Counseling department email bulletin
WIAA	Washington Interscholastic Activities Association – the league in which our sports teams participate